

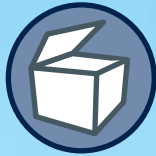
AIR-2-HTL2

FILTER FAN UNITS

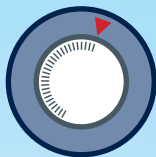

Galvani[®]
Clean technology



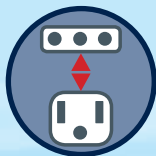
KEY POINTS



Folding opening of the casing facilitates replacement of the HEPA filters



Constant airflow: self-adjusting set-point depending on filters clogging



Powered by either European or American standard supply



Low energy consumption



Maintenance free fan



Independent Filter Fan Units designed for Filling Machine applications: the AIR-2-HTL2 series units differ from the traditional AIR-200 because they have a complete command, control and protection system built into the Unit casing, which eliminates all the control equipment that is normally mounted on the Filling Machine control board and therefore reduces the overall size of the unit as well as simplifying incorporation with the Linear Filling Machine. It can be directly hung from the ceiling using the M6 corner supports, or built into the machine to be protected.

The AIR-2-HTL2 Units are also fitted with an intelligent, self-adjusting EC fan, the air flow of which remains constant and compensates pressure drops due to progressive clogging of the filters, and ceiling lamps to light up the areas involved in the flow. The distinctive feature of the AIR-2-HTL2 unit is the "Bonnet" opening for the box, meaning the absolute filter can be replaced from the outside of the filler with no need for special tools.

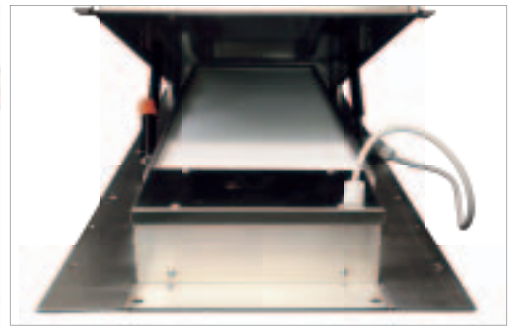
APPLIANCES

Isolators and Laminar Flow Systems for Food & Beverage Industries.



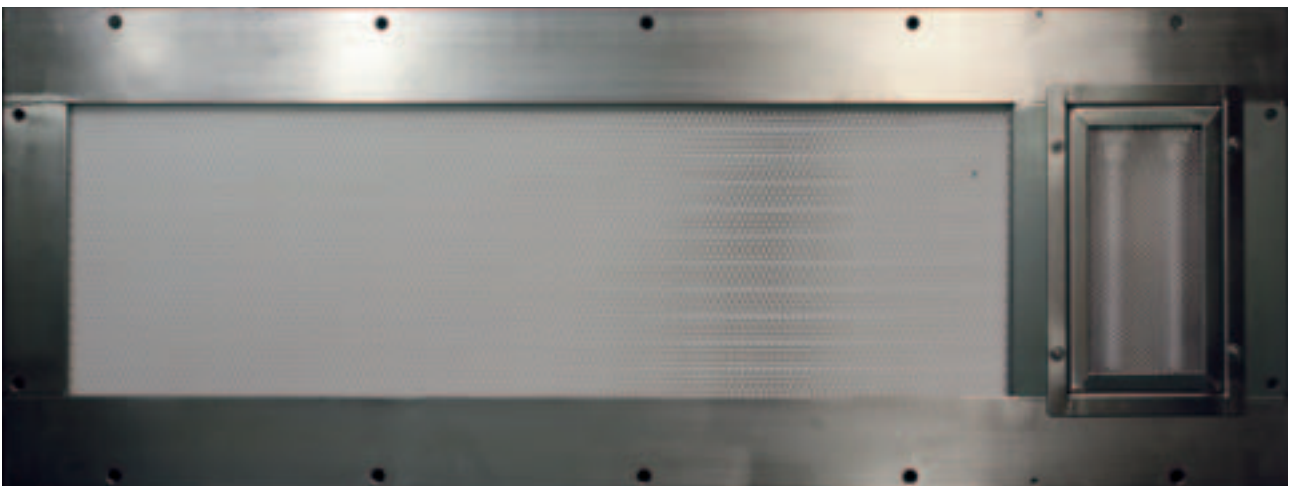
COMPONENTS' DESCRIPTION

- **Caisson container:** in stainless steel sheet AISI 304 thickness 12/10, sturdy construction, reinforced at critical points to prevent mechanical resonance of the whole.
- **Flat disposable pre-filter** G4 classe in accordance to EN 779:2012 standard.
- **Centrifugal electric fan**, with an EC electric motor, coupled directly to an aluminium rotor with inverted blades.
- **EC Controller** built into the fan to action, control and regulate it.
- **Absolute filter**, with low pressure drop, EN 1882 class.
- **Diffuser splash guards** in stainless steel AISI 304
- **Electrical panel** built into the unit to action, control and protect it.
- **Lighting** by means of waterproof ceiling light built-in the Unit.

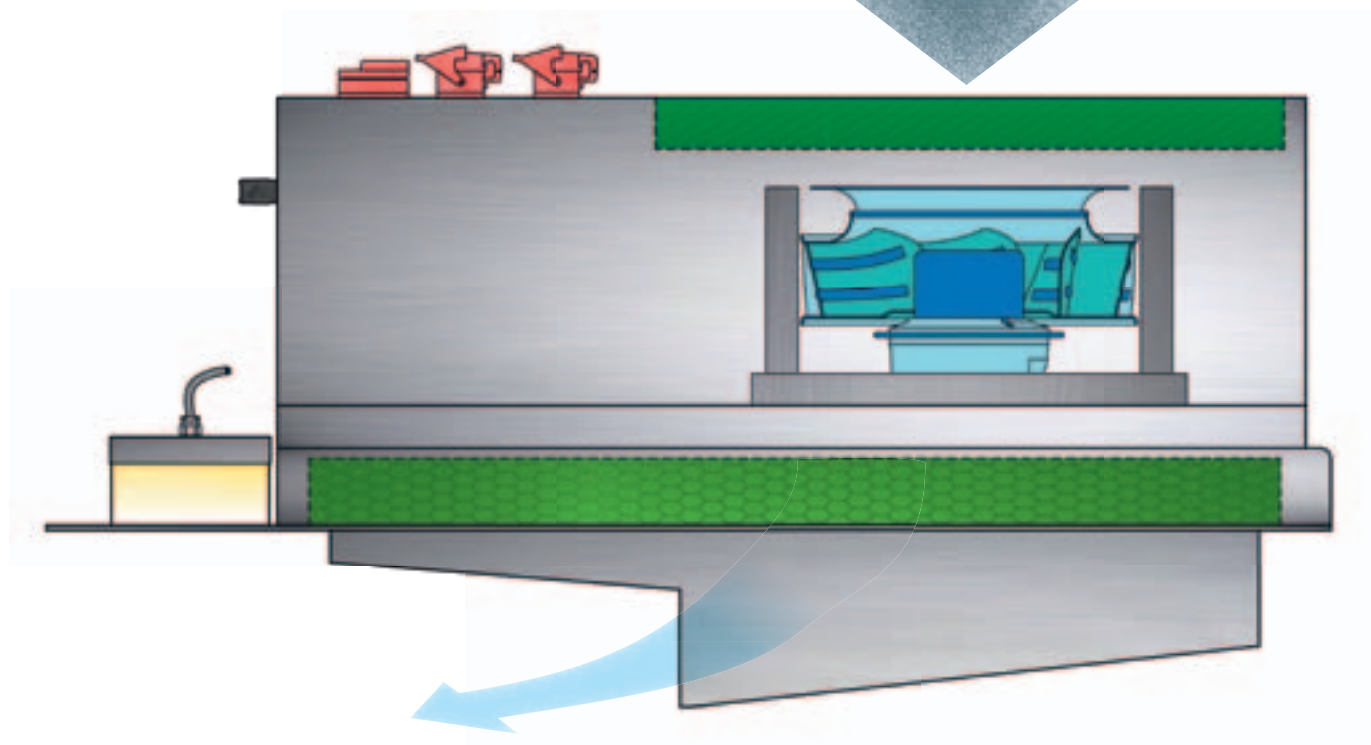


OPTIONAL ACCESSORIES

- **Pocket filter** class F7, to EN779:2012 standard, complete with stainless steel filter holder; with this accessory the unit measures
660x445x910
- 3P9: 1210x450x932 - 9P9: 1210x1210x932



DIMENSIONS

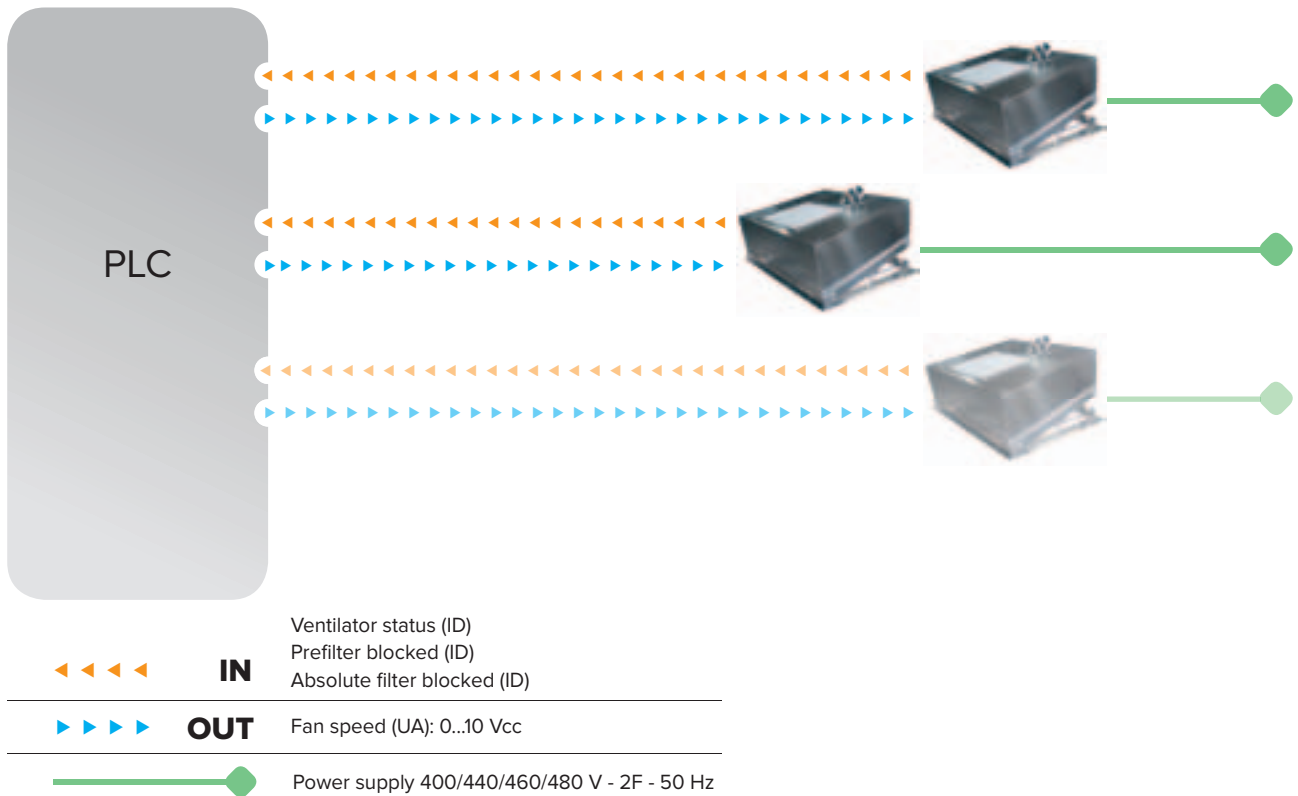


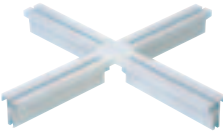
TECHNICAL DATA

TYPE	FFU dimensions mm	Air volume	Power W		Sound level	Total pressure	Weight*
	LxPxH	m ³ /h	Max	Rated	dB(A)	Pa	Kg
3P9	1.210x450x582	450	485	250	65	900	83
9P9	1.210x1.210x582	1350	500	300	71	550	132

* Filters not included

FUNCTIONAL SCHEME



CLEAN ROOMS	DEDICATED SYSTEMS	CLEAN ROOM COMPONENTS	SPECIAL EQUIPMENT	PLANT
 MICROELECTRONICS	 PRINTED CIRCUITS	 FALSE CEILINGS	 AIR SHOWERS	 CONDITIONING
 ELECTRONICS	 BOTTLING	 MOTOISED FANS	 TRANSFER HATCHES	 SUCTION
 PHARMACEUTICAL	 HOSPITALS	 WALLS	 CLEAN CABINS	 AIR DUCTING
 HOSPITALS	 PHARMACEUTICAL	 FLOATING FLOORS	 DUST REMOVAL	
 BOTTLING	 FOOD	 CEILING FIXTURES	 CHANGING ROOM FITTINGS	