

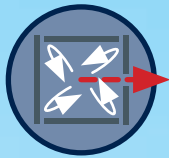
AIR-2-HT

FILTER FAN UNITS

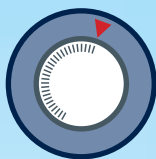

Galvani[®]
Clean technology



KEY POINTS



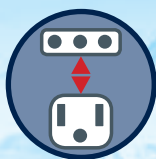
Negative pressure chamber: no contamination due to imperfect seal of the filter gaskets



Constant airflow: self-adjusting set-point depending on filters clogging



Low energy consumption



Powered by either European or American standard supply



Maintenance free fan



Independent Filter Fan Unit designed for Filling Machine applications: the AIR-2-HT series units differ from the traditional because they have a complete command, control and protection system built into the Unit casing, which eliminates all the control equipment that is normally mounted on the Filling Machine. It can be directly hung from the ceiling using the M6 corner supports, or built into the machine to be protected. The AIR-2-HT series Filter Fan Units are equipped with an EC intelligent self-adjusting fan: it keeps the airflow constant to compensate any pressure drops caused by the filter clogging. Easy to install and maintain, the AIR-2-HT series Filter Fan Units offer cutting edge technology for the Beverage Industry

APPLIANCES

Isolators and Laminar Flow Systems for Food & Beverage Industries.



COMPONENTS' DESCRIPTION



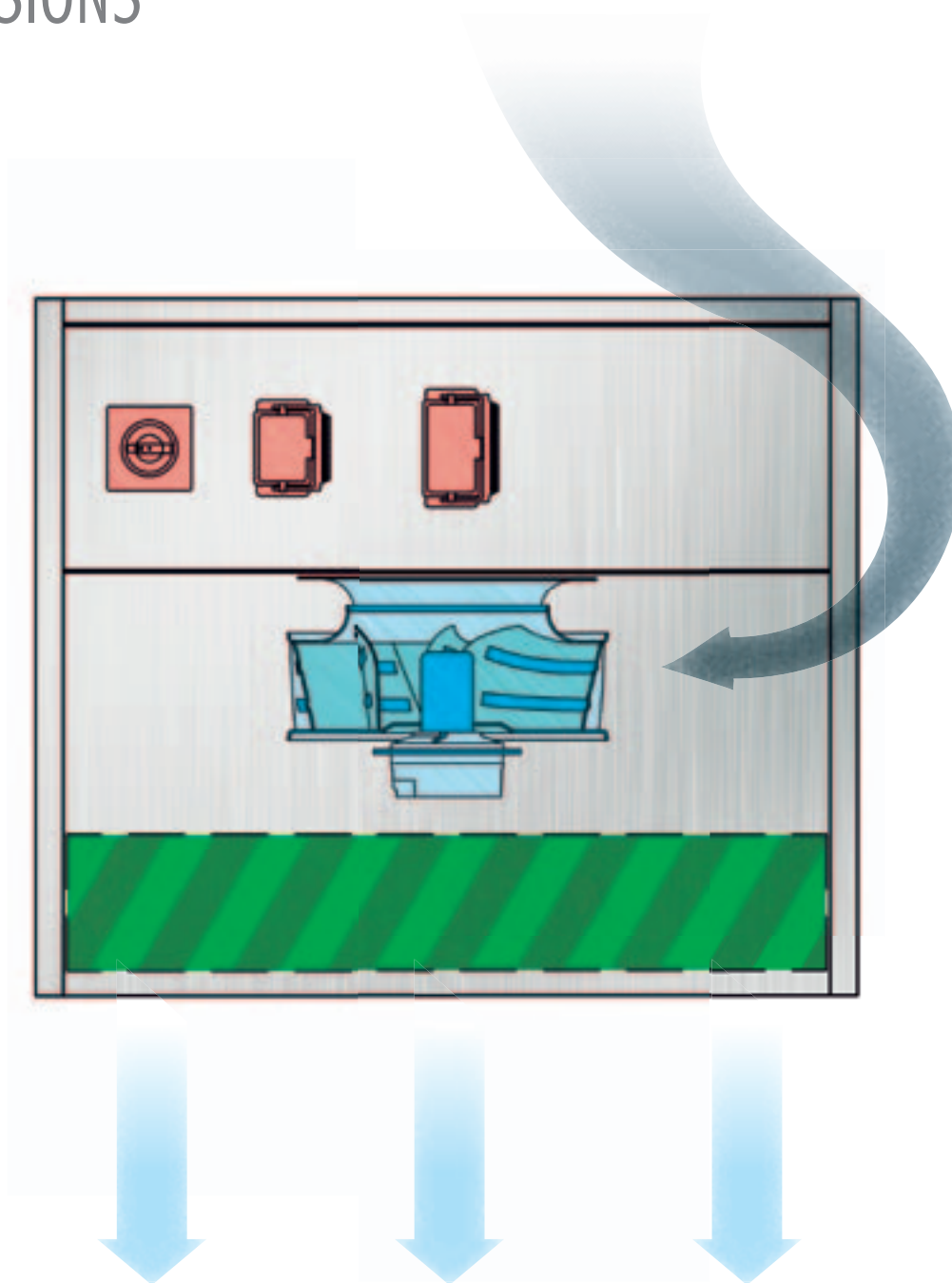
- **Container box** in stainless steel sheet AISI 304, sturdy construction, reinforced at critical points to prevent mechanical resonance of the whole.
- **Flat disposable pre-filter** G4 class, in accordance to EN 779:2012 standard.
- **Radial electric fan**, with an EC electric motor, coupled directly to an aluminium rotor with inverted blades.
- **EC Controller** built into the fan to action, control and regulate it.
- **Absolute filter**, with low pressure drop, EN 1882 class.
- **Electrical panel** built into the unit to action, control and protect it.
- Differential fan and filter status **pressure switches**.

OPTIONAL ACCESSORIES

- **Pocket filter** class F7, in accordance to EN779:2012 standard, complete with stainless steel filter holder; with this accessory the unit measures 660x445x910.



DIMENSIONS

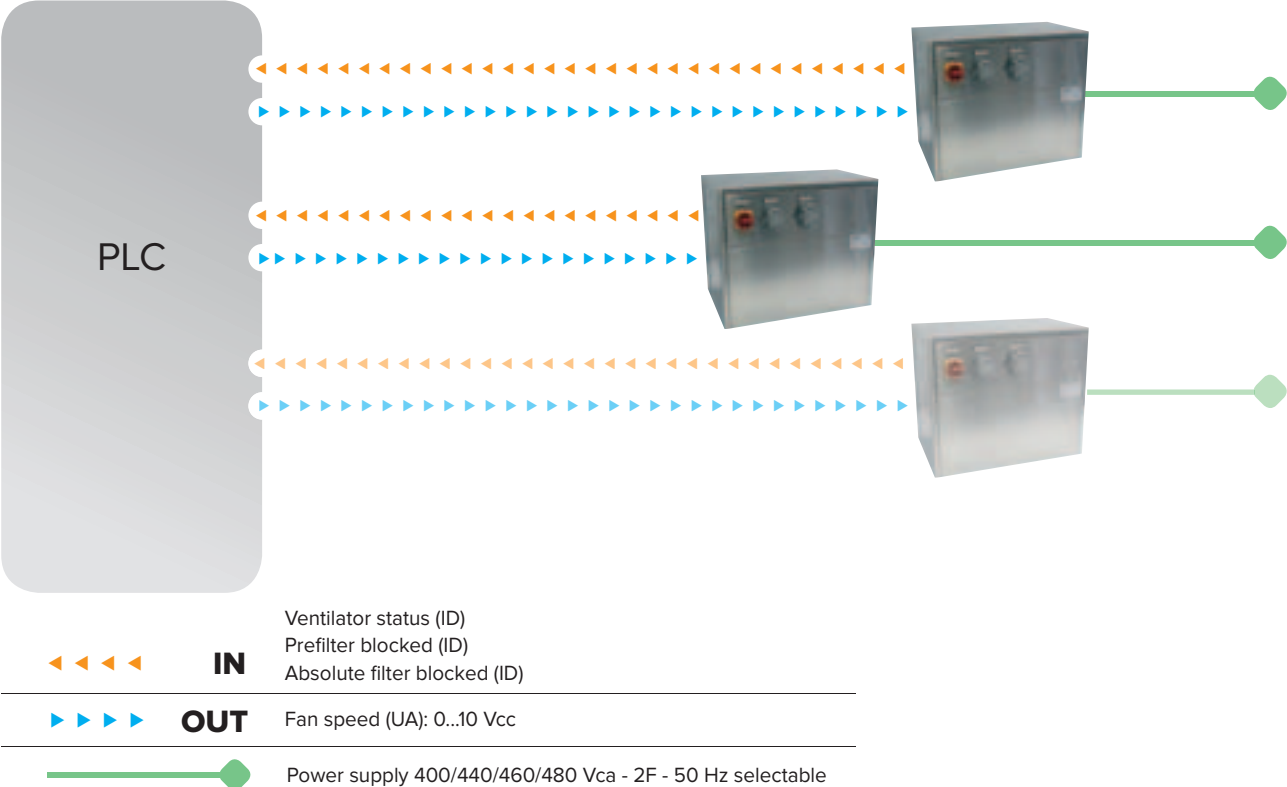



DATI TECNICI

TYPE	FFU dimensions mm	Air volume	Power W		Sound level	Total pressure	Weight*
	LxPxH	m ³ /h	Max	Rated	dB(A)	Pa	Kg
3P6	660x445x560	300	485	40	47	900	51

* Filters not included

FUNCTIONAL SCHEME



CLEAN ROOMS	DEDICATED SYSTEMS	CLEAN ROOM COMPONENTS	SPECIAL EQUIPMENT	PLANT
 MICROELECTRONICS	 PRINTED CIRCUITS	 FALSE CEILINGS	 AIR SHOWERS	 CONDITIONING
 ELECTRONICS	 BOTTLING	 MOTOISED FANS	 TRANSFER HATCHES	 SUCTION
 PHARMACEUTICAL	 HOSPITALS	 WALLS	 CLEAN CABINS	 AIR DUCTING
 HOSPITALS	 PHARMACEUTICAL	 FLOATING FLOORS	 DUST REMOVAL	
 BOTTLING	 FOOD	 CEILING FIXTURES	 CHANGING ROOM FITTINGS	